



## CAPABILITY STATEMENT

Established in 1992, TMF specializes in precision CNC machining, with a fully equipped manufacturing facility and advanced software and multi-axis machining centers. We provide timesaving services that include CAD support, finishing, and assembly.

### CORE COMPETENCIES

#### CNC PRECISION MACHINING

- 4-axis vertical machining
- 4-axis horizontal machining
- Mill-turn and turning centers
- DCC CMM automated inspection
- High volume, short run, prototype production*



#### ASSEMBLY AND INTEGRATION SERVICES

- Complex assemblies  
Project and supply chain management, support services include
- welding
  - precision sheet metal
  - part marking and serialization
  - plating and other surface finishing

#### ENGINEERING SUPPORT

- Reverse engineering  
Design for manufacturability to improve time and cost  
Production tool design  
CAD support



### CONTINUOUS EXPERIENCE IN DEFENSE

- Naval Sea Systems Command Keyport**
- Puget Sound Naval Shipyard**
- Raytheon/Integrated Defense Systems**
- 2010 Raytheon Supplier Excellence Award*

<b>DUNS Number</b>	026104922
<b>CAGE Code</b>	3D1P2
<b>Classification</b>	Small Business
<b>SAM Registered</b>	Yes
<b>ITAR Registered</b>	Yes
<b>JCP Number</b>	US/Canada Joint Certification
<b>Quality System</b>	<b>AS9100D</b> /ISO 9001:2015
<b>Other</b>	RoHS, REACH FFL, SOT, NFA

***Exceeding our customers' expectations with quality, precision, and service***

<b>SIC</b>	<b>3599-03 Machine Shops, Primary</b>
<b>NAICS</b>	<b>332710 Machine Shops, Primary</b>
	<b>332721 Precision Turned Manufacturing</b>
	332510 Aircraft hardware manufacturing
	332999 All other miscellaneous fabricated metal product manufacturing
	332313 Plate work manufacturing
	332322 Sheet metal work manufacturing
	332420 Metal tank (heavy gauge) manufacturing
	332722 Bolt, nut, screw, rivet and washer manufacturing
	333511 Industrial mold manufacturing
	333513 Other aircraft parts and auxiliary equipment manufacturing
	334419 Other electronic component manufacturing
	336415 Guided missile and space missile propulsion unit and propulsion unit parts manufacturing
	339993 Packaging machinery manufacturing

## CONTACT INFORMATION

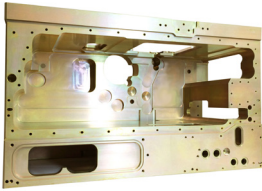
**Chris Wood**  
Sales Manager  
T: (360) 598-1750, Ext. 112  
chris@tmf-inc.com

**Anna Reyes-Potts**  
General Manager  
T: (360) 598-1750, Ext. 115  
arpotts@tmf-inc.com

26273 Twelve Trees Lane NW  
Suite B  
Poulsbo, WA 98370  
www.tmf-inc.com

## KEY EQUIPMENT

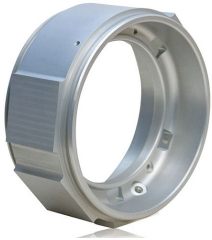
### 4-AXIS HORIZONTAL MILLING



#### MORI SEIKI NH4000 (2)

<b>Max spindle speed</b>	14,000 RPM	<b>Other</b>	Full 4th Axis
<b>Work envelope</b>	22" x 22" x 24.8"		2 ea 400mm pallet
<b>Tool capacity</b>	180 tools, 60 tools		High pressure coolant Renishaw probing system

### 4-AXIS VERTICAL MILLING



#### HAAS VF3SS (2)

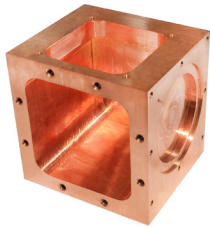
<b>Max spindle speed</b>	12,000 RPM, 30 HP	<b>Other</b>	Haas HRT-160 4th axis/indexer Renishaw probing system
<b>Work envelope</b>	40" x 20" x 25"		
<b>Tool capacity</b>	40 tools, 24 tools		

#### HAAS VF2SS

<b>Max spindle speed</b>	12,000 RPM, 30 HP	<b>Other</b>	Haas HRT-160 4th axis/indexer Renishaw probing system
<b>Work envelope</b>	30" x 16" x 20"		
<b>Tool capacity</b>	24 tools		

#### HAAS VF3B

<b>Max spindle speed</b>	10,000 RPM, 20 HP	<b>Other</b>	Haas HRT-160 4th axis/indexer Renishaw probing system
<b>Work envelope</b>	40" x 20" x 25"		
<b>Tool capacity</b>	24 tools		



### MILL-TURN, TURN CENTERS

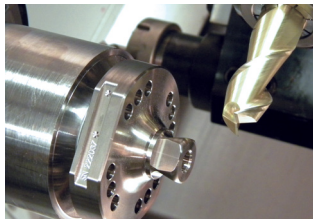


#### MORI SEIKI NL 2500 Y700

<b>Max spindle speed</b>	4,000 RPM, 26 HP	<b>Other</b>	Y-C Axial live tool for in-machine milling and drilling LNS Quick Load bar feed
<b>Work envelope</b>	10.83" x 27.75"		
<b>Bar Capacity</b>	3.10"		

#### MORI SEIKI Duraturn 2550

<b>Max spindle speed</b>	2,600 RPM, 30 HP	<b>Other</b>	LNS Quick Load bar feed
<b>Work envelope</b>	24" x 22.5"		
<b>Bar Capacity</b>	3.10"		



## INSPECTION, SUPPORT EQUIPMENT, SOFTWARE

### INSPECTION

Brown & Sharpe MicroXcel  
765 CMM-DCC  
Tesa Hite 400 digital height gage (2)  
Sunnen bore gages  
Starrett inspection plate  
Grade A, 48" x 72"  
Accu-Scope with Infinity 1 camera

### SUPPORT EQUIPMENT

Tree 325 Journeyman, knee mill 3-axis (2)  
Trak DPM bed mill, 3-axis  
Lagun FTV knee mill, 3-axis  
Milltronics ML-17 lathe  
Bridgeport lathe  
Delapena Model S Speedhone  
Lincoln TIG welder  
20" x 10" x 12' Wells production band saw

### SOFTWARE

SOLIDWORKS  
ESPRIT  
Mastercam  
Nikon CMM Manager  
Part Tracker  
DISCUS FAI

### FILE FORMATS

SOLIDWORKS  
CATIA  
Pro/ENGINEER  
Parasolid  
STP  
IGS  
DWG/DXF

## CONTACT INFORMATION

**Chris Wood**  
Sales Manager  
T: (360) 598-1750, Ext. 112  
chris@tmf-inc.com

**Anna Reyes-Potts**  
General Manager  
T: (360) 598-1750, Ext. 115  
arpotts@tmf-inc.com

**TMF, Inc.**  
26273 Twelve Trees Lane NW  
Suite B  
Poulsbo, WA 98370  
www.tmf-inc.com