



CAPABILITY STATEMENT

Established in 1992, TMF specializes in precision CNC machining, with a fully equipped manufacturing facility and advanced software and multi-axis machining centers. We provide timesaving services that include CAD support, finishing, and assembly.

CORE COMPETENCIES

CNC PRECISION MACHINING

- 4-axis vertical machining
- 4-axis horizontal machining
- Mill-turn and turning centers
- DCC CMM automated inspection
- High volume, short run, prototype production*



ASSEMBLY AND INTEGRATION SERVICES

Complex assemblies
Project and supply chain management, support services include

- welding
- precision sheet metal
- part marking and serialization
- plating and other surface finishing

ENGINEERING SUPPORT

Reverse engineering
Design for manufacturability to improve time and cost
Production tool design
CAD support



CONTINUOUS EXPERIENCE IN DEFENSE

Naval Sea Systems Command Keyport
Puget Sound Naval Shipyard
Raytheon/Integrated Defense Systems
2010 Raytheon Supplier Excellence Award

DUNS Number	026104922
CAGE Code	3D1P2
Classification	Small Business
SAM Registered	Yes
ITAR Registered	Yes
JCP Number	US/Canada Joint Certification
Quality System	AS9100D /ISO 9001:2015
Other	RoHS, REACH FFL, SOT, NFA

*Exceeding our customers' expectations
with quality, precision, and service*

SIC	
3599-03	Machine Shops, Primary
NAICS	
332710	Machine Shops, Primary
332721	Precision Turned Manufacturing
332510	Aircraft hardware manufacturing
332999	All other miscellaneous fabricated metal product manufacturing
332313	Plate work manufacturing
332322	Sheet metal work manufacturing
332420	Metal tank (heavy gauge) manufacturing
332722	Bolt, nut, screw, rivet and washer manufacturing
333511	Industrial mold manufacturing
333513	Other aircraft parts and auxiliary equipment manufacturing
334419	Other electronic component manufacturing
336415	Guided missile and space missile propulsion unit and propulsion unit parts manufacturing
339993	Packaging machinery manufacturing

CONTACT INFORMATION

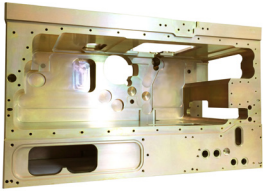
Chris Wood
Sales Manager
T: (360) 598-1750, Ext. 112
chris@tmf-inc.com

Anna Reyes-Potts
General Manager
T: (360) 598-1750, Ext. 115
arpotts@tmf-inc.com

26273 Twelve Trees Lane NW
Suite B
Poulsbo, WA 98370
www.tmf-inc.com

KEY EQUIPMENT

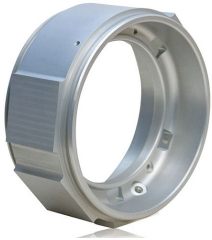
4-AXIS HORIZONTAL MILLING



MORI SEIKI NH4000 (2)

Max spindle speed	14,000 RPM	Other	Full 4th Axis
Work envelope	22" x 22" x 24.8"		2 ea 400mm pallet
Tool capacity	180 tools, 60 tools		High pressure coolant Renishaw probing system

4-AXIS VERTICAL MILLING



HAAS VF3SS (2)

Max spindle speed	12,000 RPM, 30 HP	Other	Haas HRT-160 4th axis/indexer Renishaw probing system
Work envelope	40" x 20" x 25"		
Tool capacity	40 tools, 24 tools		

HAAS VF2SS

Max spindle speed	12,000 RPM, 30 HP	Other	Haas HRT-160 4th axis/indexer Renishaw probing system
Work envelope	30" x 16" x 20"		
Tool capacity	24 tools		

HAAS VF3B

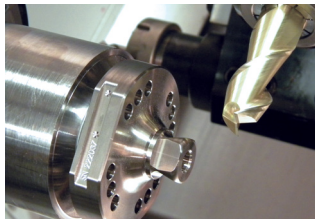
Max spindle speed	10,000 RPM, 20 HP	Other	Haas HRT-160 4th axis/indexer Renishaw probing system
Work envelope	40" x 20" x 25"		
Tool capacity	24 tools		

MILL-TURN, TURN CENTERS



MORI SEIKI NL 2500 Y700

Max spindle speed	4,000 RPM, 26 HP	Other	Y-C Axial live tool for in-machine milling and drilling LNS Quick Load bar feed
Work envelope	10.83" x 27.75"		
Bar Capacity	3.10"		



MORI SEIKI Duraturn 2550

Max spindle speed	2,600 RPM, 30 HP	Other	LNS Quick Load bar feed
Work envelope	24" x 22.5"		
Bar Capacity	3.10"		

INSPECTION, SUPPORT EQUIPMENT, SOFTWARE

INSPECTION

Brown & Sharpe MicroXcel
765 CMM-DCC
Tesa Hite 400 digital height gage (2)
Sunnen bore gages
Starrett inspection plate
Grade A, 48" x 72"
Accu-Scope with Infinity 1 camera

SUPPORT EQUIPMENT

Tree 325 Journeyman, knee mill 3-axis (2)
Trak DPM bed mill, 3-axis
Lagun FTV knee mill, 3-axis
Milltronics ML-17 lathe
Bridgeport lathe
Delapena Model S Speedhone
Lincoln TIG welder
20" x 10" x 12' Wells production band saw

SOFTWARE

SOLIDWORKS
ESPRIT
Mastercam
Nikon CMM Manager
Part Tracker
DISCUS FAI

FILE FORMATS

SOLIDWORKS
CATIA
Pro/ENGINEER
Parasolid
STP
IGS
DWG/DXF

CONTACT INFORMATION

Chris Wood
Sales Manager
T: (360) 598-1750, Ext. 112
chris@tmf-inc.com

Anna Reyes-Potts
General Manager
T: (360) 598-1750, Ext. 115
arpotts@tmf-inc.com

TMF, Inc.
26273 Twelve Trees Lane NW
Suite B
Poulsbo, WA 98370
www.tmf-inc.com